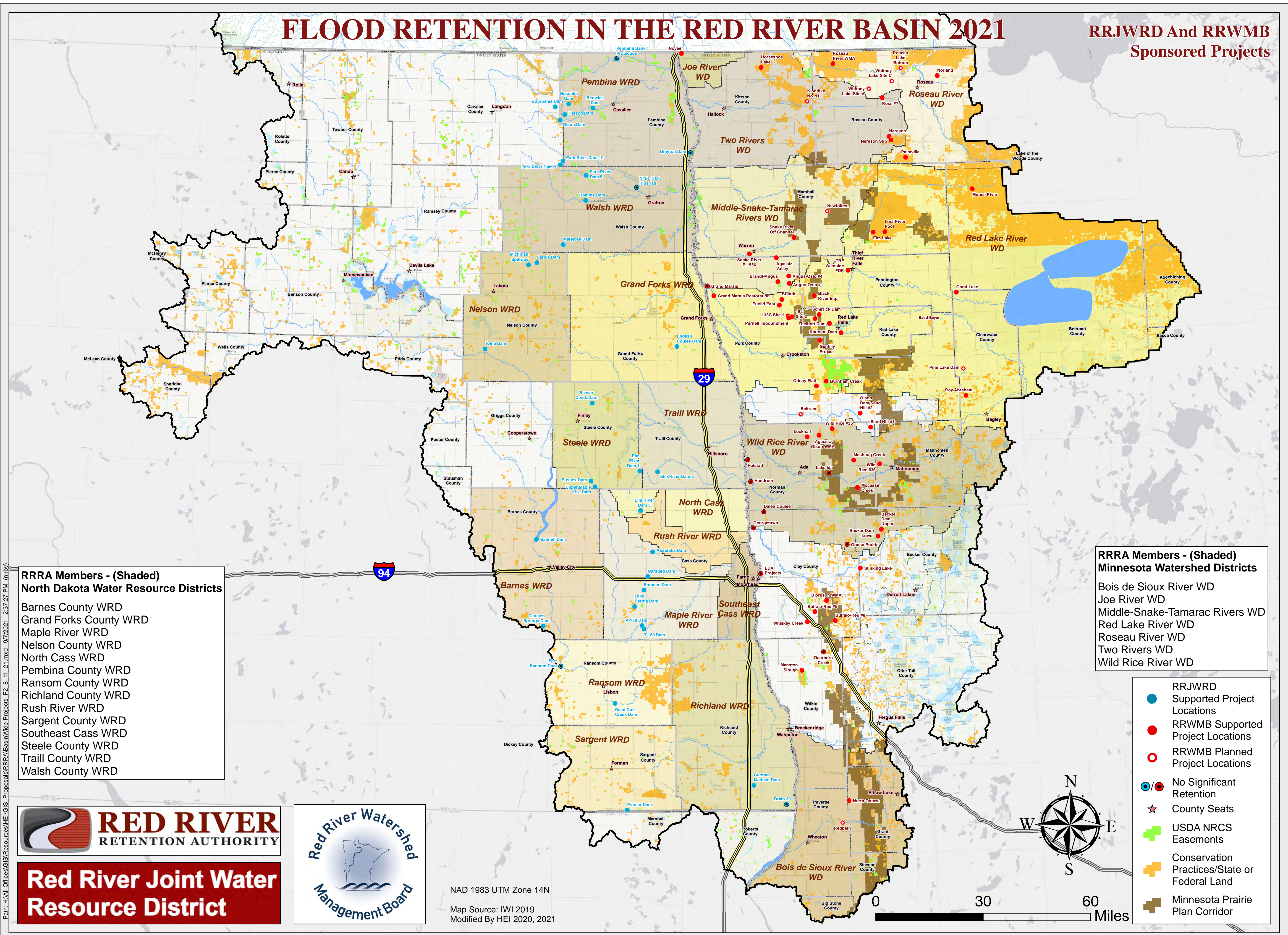


FLOOD RETENTION IN THE RED RIVER BASIN 2021

RRJWRD And RRWMB
Sponsored Projects



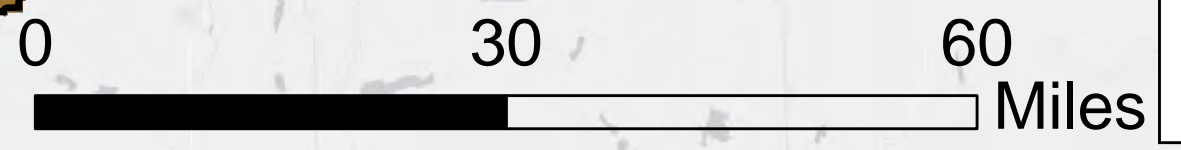
- RRRA Members - (Shaded)
North Dakota Water Resource Districts**
- Barnes County WRD
 - Grand Forks County WRD
 - Maple River WRD
 - Nelson County WRD
 - North Cass WRD
 - Pembina County WRD
 - Ransom County WRD
 - Richland County WRD
 - Rush River WRD
 - Sargent County WRD
 - Southeast Cass WRD
 - Steele County WRD
 - Traill County WRD
 - Walsh County WRD

- RRRA Members - (Shaded)
Minnesota Watershed Districts**
- Bois de Sioux River WD
 - Joe River WD
 - Middle-Snake-Tamarac Rivers WD
 - Red Lake River WD
 - Roseau River WD
 - Two Rivers WD
 - Wild Rice River WD

- RRJWRD Supported Project Locations
- RRWMB Supported Project Locations
- RRWMB Planned Project Locations
- /○ No Significant Retention
- ★ County Seats
- USDA NRCS Easements
- Conservation Practices/State or Federal Land
- Minnesota Prairie Plan Corridor



NAD 1983 UTM Zone 14N
Map Source: IWI 2019
Modified By HEI 2020, 2021



Path: H:\All Offices\GIS\Resources\HEI\GIS_Proposals\RRRA\BasinWide\Projects\F2_8_11_21.mxd 9/7/2021 2:37:27 PM (nrbv)