

A wide-angle photograph of a vast field of young corn plants. The plants are in the early stages of growth, with several green leaves visible. The field stretches to a flat horizon line. Above the horizon, the sky is filled with heavy, dark, grey clouds, suggesting an approaching storm or late evening. The overall mood is dramatic and somewhat ominous.

IS YOUR FARM'S SOIL READY FOR THE NEXT BIG RAIN?

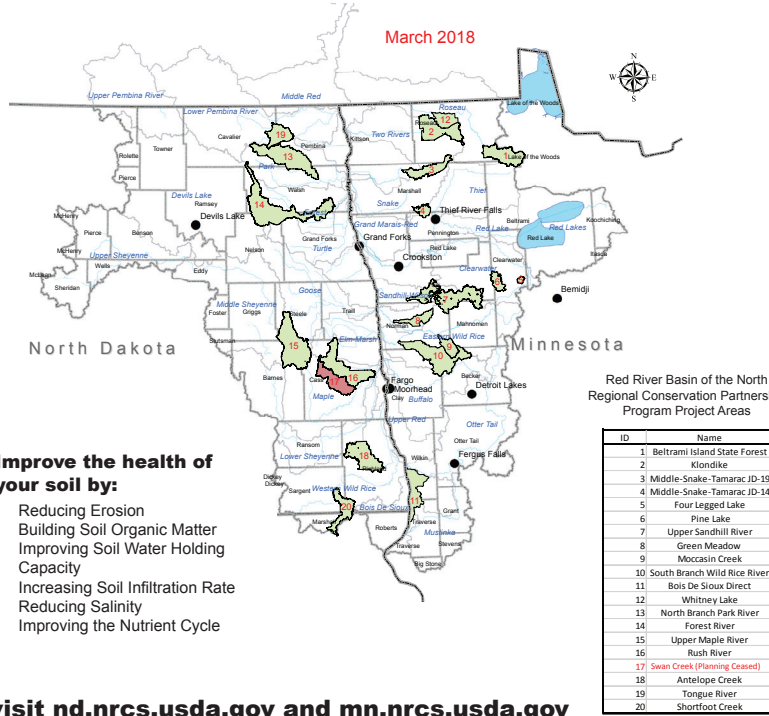
DID YOU KNOW?

More than 80% of the annual sediment lost in field runoff occurs in the months of May and June. Controlling soil loss during this critical period also controls significant amounts of the phosphorus and nitrogen in surface runoff. Conservation practices in the right places will help reduce these losses and retain water in soil profile.



1120 28th Ave N., Suite C
Fargo, ND 58102

PRST STD
U.S. POSTAGE
PAID
FARGO, ND
PERMIT NO. 107



Improve the health of your soil by:

- Reducing Erosion
- Building Soil Organic Matter
- Improving Soil Water Holding Capacity
- Increasing Soil Infiltration Rate
- Reducing Salinity
- Improving the Nutrient Cycle

visit nd.nrcs.usda.gov and mn.nrcs.usda.gov



Learn about soil health and what farmers are doing to reduce sediment and nutrient losses and reduce runoff. Contact your local NRCS Service Center and Soil and Water Conservation District for technical and financial assistance to address resource concerns on your farm and ranch. Ask about a no obligation consultation of where the most critical areas are located on your farm.